

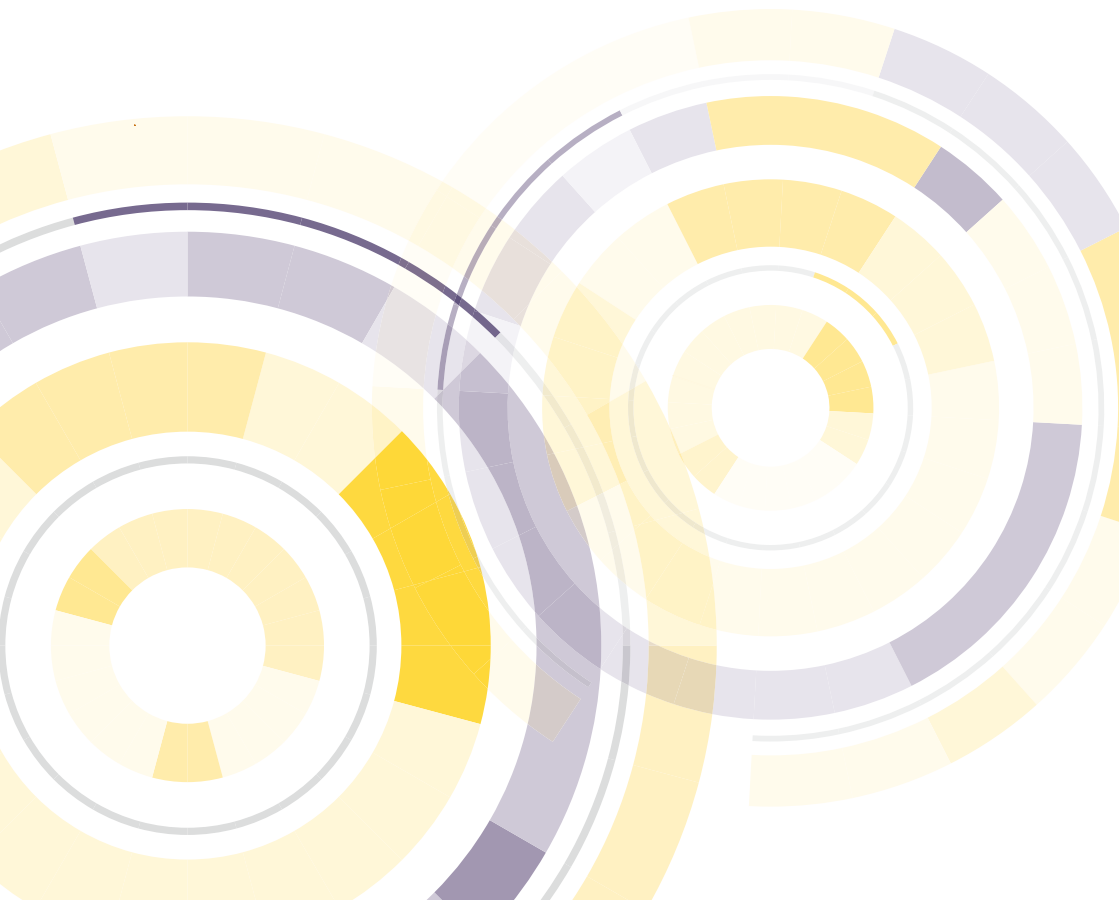


熊本大学
Kumamoto University

データで見る熊本大学

2024

A LOOK AT KUMAMOTO UNIVERSITY THROUGH DATA



CONTENTS

1	Vision and Goals	1	8	Global Engagement	8
2	History and Organization	2	9	University Library	11
3	Student Enrollment	3	10	University Hospital	11
4	Student Admission・After Graduation	4	11	Budget Breakdown	12
5	Research	5	12	University Personnel	12
6	University-Industry Collaboration	7	13	University Campuses	13
7	Local Cooperation	7			

1 Vision and Goals

— Vision —

Kumamoto University aims to contribute to the community and global society by cultivating intelligent, moral, and skillful people, while working for the creation, inheritance, and development of knowledge, following the spirit of the Fundamental Law of Education and the School Education Law.

— Goals — Education

In order to cultivate unique, creative people, the university provides a comprehensive education based on a consistent philosophy followed by all our undergraduate departments and graduate schools.

Our undergraduate departments, with the help of a broad education, inculcate in students the abilities of international communication, adapting to the information age, and thinking and acting independently.

Our graduate schools cultivate highly specialized workers with comprehensive reasoning ability, technical knowledge, and internationally recognized skills, in addition to deep insight into humankind and nature, on the basis of the undergraduate education that our student receive.

As an institution that is open to the public, the university offers a place where people can engage in lifelong learning.

Research

The university strives to protect and develop humankind's cultural heritage, while enhancing its capabilities to function as a center of advanced academic research and proactively promote cutting-edge, creative academic research.

In addition, by making use of its unique features, comprehensively deepening knowledge in the fields of human science, social science, and natural science, as well as promoting interdisciplinary research, Kumamoto University is working to contribute to the harmonious coexistence of humans and the environment, as well as sustainable societal development.

Contributions to local and global communities

As a university located in a regional hub city, the university will strengthen its cooperation with the local community and serve the functions of being a central research facility and cultivating leaders in the local community. By striving to convey our academic culture to the world, the university will contribute to the promotion of local industry and to advancing the provision of information about the culture.

In addition, the university strives to promote international intellectual exchange, educate international students, and train graduate students capable of producing a bilateral international exchange.



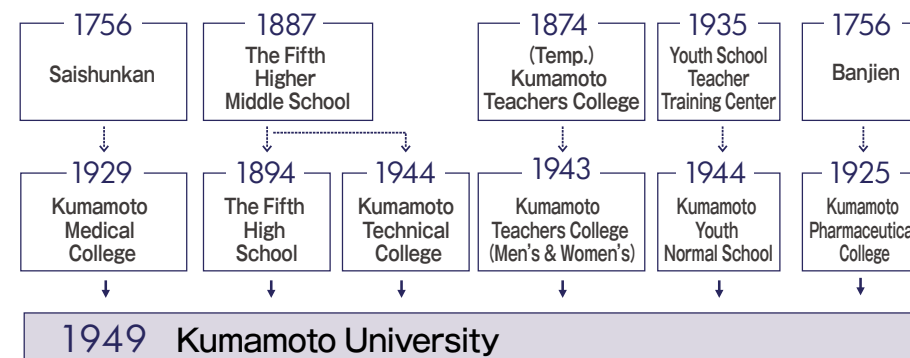
University Emblem



Communication Mark

2 History and Organization

A long tradition and history of **268** years since Saishunkan was established, and **137** years since The Fifth Higher Middle School was established.



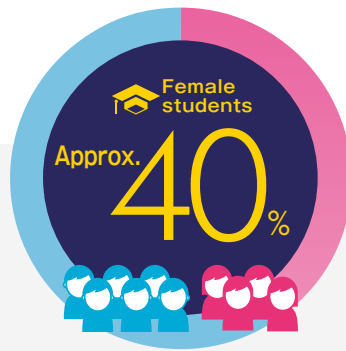
2004 National University Corporation Kumamoto University

Faculties	Adjunct Facilities and Organizations
<ul style="list-style-type: none"> Faculty of Letters Faculty of Education Faculty of Law Faculty of Science School of Medicine School of Pharmacy Faculty of Engineering School of Informatics 	<ul style="list-style-type: none"> Kumamoto University Hospital Priority Organization for Innovation and Excellence Kumamoto Innovative Development Organization Organization for Globalization Headquarters for Admissions and Education Institute of Light Metals Research and Education Institute for Semiconductors and Informatics Organization for Kumamoto University Campus Museum International Research Center for Medical Sciences International Research Organization for Advanced Science and Technology Joint Research Center for Human Retrovirus Infection University Library Health Care Center Student Accessibility Support Room University Archives Institutional Research Office Campus Design Office Equity, Diversity and Inclusion Office
Graduate Schools	Inter-Department Institutes for Education and Research
<ul style="list-style-type: none"> Faculty of Humanities and Social Sciences Graduate School of Social and Cultural Sciences Faculty of Advanced Science and Technology Graduate School of Science and Technology Faculty of Life Sciences Graduate School of Medical Sciences Graduate School of Health Sciences Graduate School of Pharmaceutical Sciences Graduate School of Education (Professional Graduate School) 	<ul style="list-style-type: none"> Eisei-Bunko Research Center Center for Water Cycle, Marine Environment, and Disaster Management Magnesium Research Center Institute of Resource Development and Analysis Environmental Safety Center Research Center for Buried Cultural Properties
Diploma Course	
<ul style="list-style-type: none"> Diploma Course in Special Needs Education 	
Special Course	
<ul style="list-style-type: none"> Yogo Teacher Training Special Course 	
Research Institutes	
<ul style="list-style-type: none"> Institute of Molecular Embryology and Genetics Institute of Industrial Nanomaterials 	

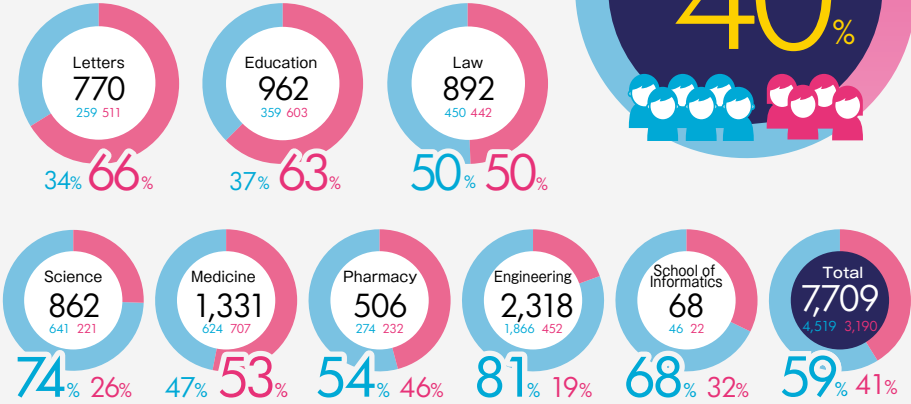
3 Student Enrollment

11,098
Students, including attaches schools

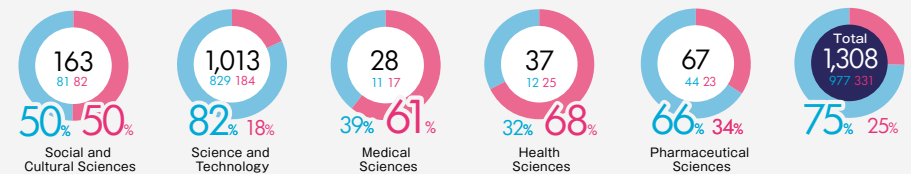
Male 6,641
Female 4,457



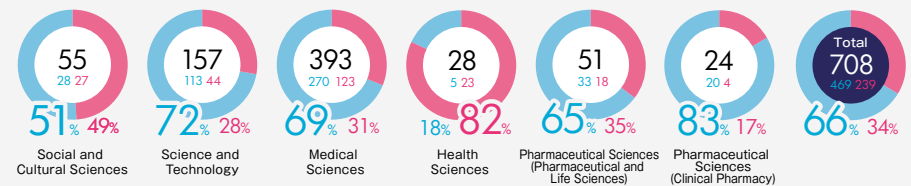
Undergraduate Students



Graduate Students (Master)



Graduate Students (Doctor)



Professional Graduate School



Diploma Course and Special Course

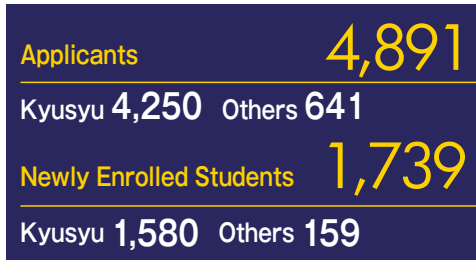
Diploma Course in Special Needs Education	9
Yogo Teacher Training Special Course	44
Total	53

Attached Schools

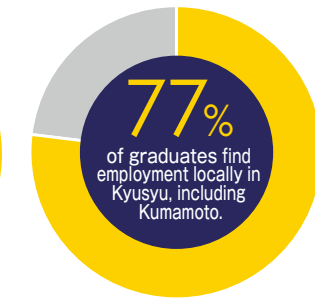
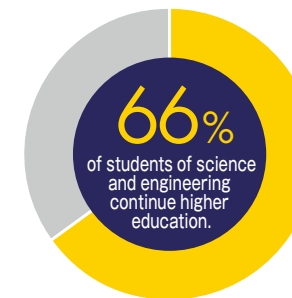
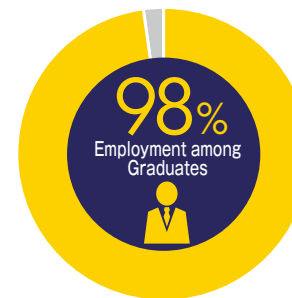
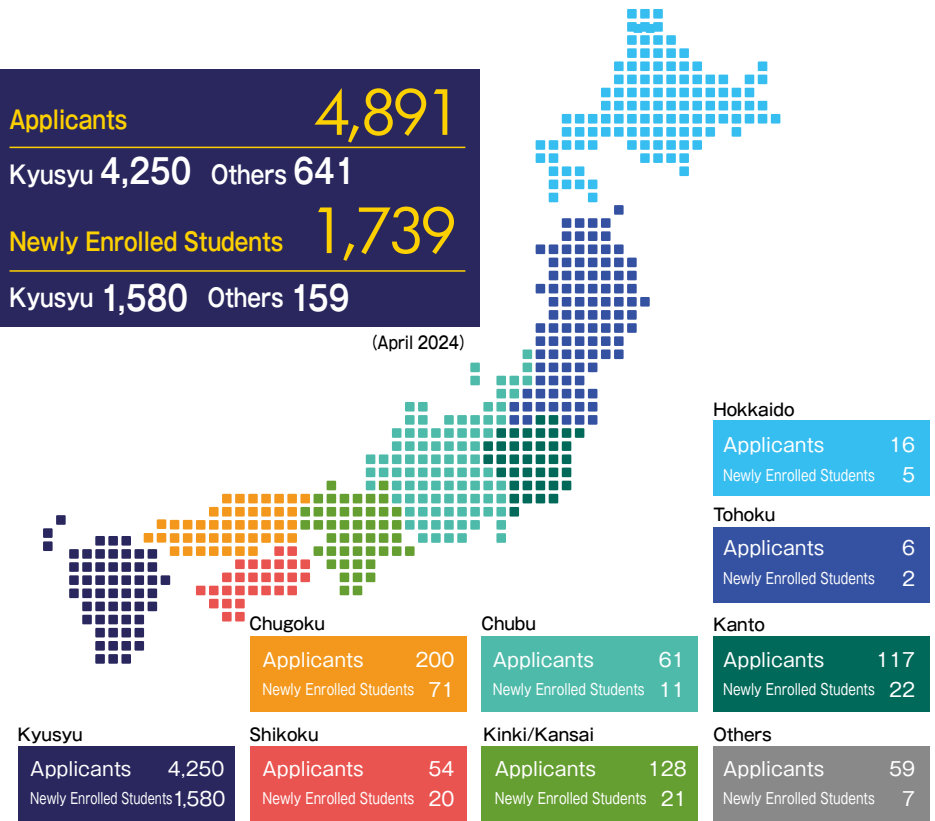
Kindergarten	91	Junior High School	468
Elementary School	644	Special Support School	60
Total	1,263	Total	1,263

(May 1st, 2024)


4 Student Admission·After Graduation



(April 2024)



5 Research

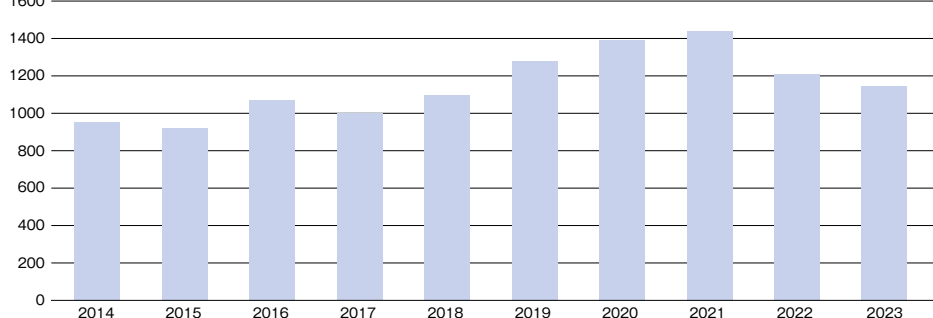
Kumamoto University's citation count is **29th** in Japan 

- Based on the "Essential Science Indicators" database from Clarivate.
- The 10 year citation count is calculated between January 2014 and April 2024.
- This ranking is not only for universities but also includes research institutes, laboratories, and companies.

Japanese institution citation counts (out of 9,210 institutions around the world)

Japan Ranking	World Ranking	Institution	Number of Papers	Cites	Cites/Paper	Japan Ranking	World Ranking	Institution	Number of Papers	Cites	Cites/Paper
1	73	UNIVERSITY OF TOKYO	96,791	2,095,788	21.65	16	759	KOBE UNIVERSITY	19,490	342,826	17.59
2	145	KYOTO UNIVERSITY	67,212	1,413,354	21.03	17	795	NATIONAL CANCER CENTER - JAPAN	10,235	324,249	31.68
3	277	OSAKA UNIVERSITY	51,672	916,826	17.74	18	836	NATIONAL INSTITUTES OF NATURAL SCIENCES (NINS) - JAPAN	13,298	303,357	22.81
4	288	TOHOKU UNIVERSITY	51,269	890,671	17.37	19	912	CHIBA UNIVERSITY	16,807	276,012	16.42
5	339	RIKEN	29,182	777,917	26.66	20	930	OKAYAMA UNIVERSITY	16,580	269,646	16.26
6	362	NAGOYA UNIVERSITY	39,776	717,338	18.03	21	1,012	WASEDA UNIVERSITY	15,443	240,582	15.58
7	374	KYUSHU UNIVERSITY	38,773	689,519	17.78	22	1,045	TOKYO MEDICAL & DENTAL UNIVERSITY (TMDU)	13,428	233,889	17.42
8	417	HOKKAIDO UNIVERSITY	37,762	623,876	16.52	23	1,073	OSAKA METROPOLITAN UNIVERSITY	15,447	226,508	14.66
9	503	JAPAN SCIENCE & TECHNOLOGY AGENCY (JST)	16,677	533,764	32.01	24	1,150	YOKOHAMA CITY UNIVERSITY	9,961	206,206	20.7
10	555	UNIVERSITY OF TSUKUBA	27,045	482,585	17.84	25	1,176	KANAZAWA UNIVERSITY	13,161	202,249	15.37
11	562	NATIONAL INSTITUTE FOR MATERIALS SCIENCE	16,455	476,532	28.96	26	1,211	SHINSHU UNIVERSITY	10,682	196,709	18.41
12	566	TOKYO INSTITUTE OF TECHNOLOGY	26,703	473,298	17.72	27	1,234	TOKYO METROPOLITAN UNIVERSITY	7,655	193,562	25.29
13	600	NATIONAL INSTITUTE OF ADVANCED INDUSTRIAL SCIENCE & TECHNOLOGY (AIST)	24,368	441,527	18.12	28	1,239	NIIGATA UNIVERSITY	11,547	193,317	16.74
14	614	KEIO UNIVERSITY	23,955	433,365	18.09	29	1,243	KUMAMOTO UNIVERSITY	11,739	192,232	16.38
15	744	HIROSHIMA UNIVERSITY	23,356	350,892	15.02	30	1,319	JUNTENDO UNIVERSITY	10,867	178,701	16.44

Changes in Numbers of Publications



- Based on "InCites Benchmarking" database by Clarivate.
- The analysis target is publications (Articles, Review) from 2014 to 2023.

5 Research

Kumamoto University set 3 support stages, "Globally-advanced," "Excellent" and "Challenging" research projects, to encourage and support according to each stage from project starting to world best research.

Globally-advanced Research

Four Groups, which have been selected for the Global COE program in the past, have established a world-class education and research core, and have develop human resources leading the world. They represent Kumamoto University as the world's highest-level advanced and leading research groups.

Group
International research enhancement project for Stem cell Biology and Developmental Medicine
Collaboration platform for advanced research in viral infections
Research Center Formation Program for Two-dimensional Nanomaterials
The project of integrating research and education for advanced light metals



Kumamoto University Challenging Research Projects

Bold research projects with the potential for revolutionizing established concepts and changing the direction of academia fall within the framework of Kumamoto University Challenging Research Projects. These programs aim to revitalize research that may represent the future of Kumamoto University and are funded for one year.



Cross Frontier Research Grant

This grant supports basic research of interdisciplinary teams that are expected to revolutionize and change the direction of existing academic fields. The aim of the project is to support the creation of research areas that will improve the academic standing of the university as a whole and foster our young researchers.



6 University-Industry Collaboration

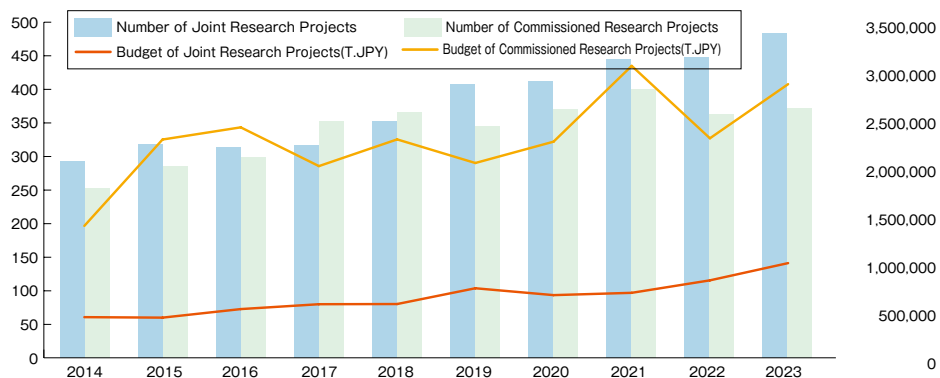
Asia Pacific's Most Innovative Universities 2019 by Reuter

Top **10** in Japan

Joint and Commissioned Research Projects(FY2023)

Kumamoto University promotes joint research projects and commissioned research projects in order to cooperate with the industries with "Kumamoto Innovative Development Organization" as the contact point.

Joint Research Projects **483** Commissioned Research Projects **369**
 Budget **994,210,000yen** Budget **3,037,110,000yen**



7 Local Cooperation

Volunteer activities

We volunteer in areas affected by the Kumamoto earthquake and heavy rain disasters, revitalize the region, and support children.

Student Volunteer in AY2022

146



Volunteer Activities in Kikuchi City



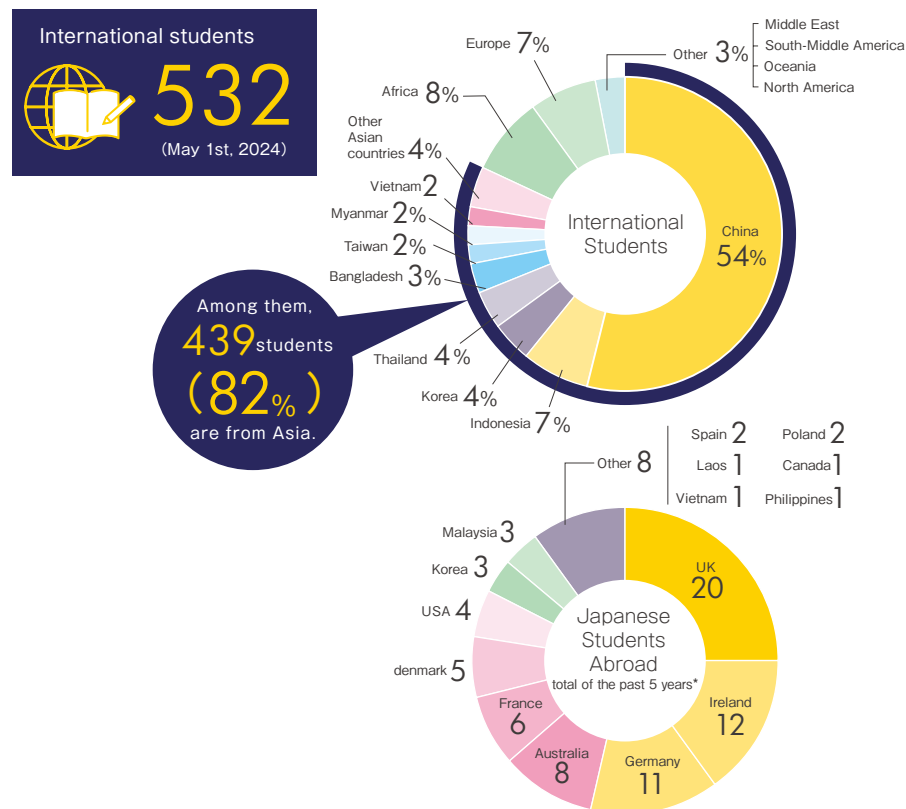
Mask-making volunteers

8 Global Engagement

International exchange agreements

As a university leading the globalization of the region, Kumamoto University positively promotes exchanges with the top universities in Asia, the United States and Europe under the slogan "A Leading University Cultivating Global Leaders from Kumamoto". We have signed international exchange agreements with 274 institutions in 54 countries/regions around the world (as of May 2024).

International students and Japanese students studying abroad



*only students dispatched to partner universities from more than 3 months to less than 1 year.

Researchers and scholars exchanges

In AY2023, 743 researchers were sent abroad and 401 foreign researchers visited to Kumamoto University.

8 Global Engagement

8 overseas offices **7** countries / regions

Overseas offices are established aiming to service as a base of research and educational exchange, to promote joint researches with foreign researchers and to disseminate information on Japan and Kumamoto University.

- Kumamoto University Liaison Office at KAIST <Korea>
- Kumamoto University Liaison Office at STUST <Taiwan>
- Kumamoto University Liaison Office at ITS <Indonesia>
- Kumamoto University Sudan Office <Sudan>
- Kumamoto University Liaison Office in Tanzania<Tanzania>
- Six National Universities Network (SUN) Changchun Joint Office <China>
- Six National Universities Network (SUN) ASEAN Platform of SixERS <Thailand>
- Six National Universities Network (SUN) Surabaya Office of SixERS<Indonesia>

Kumamoto University Liaison Office at KAIST
<Korea>



Kumamoto University Liaison Office at ITS
<Indonesia>



Kumamoto University Liaison Office at STUST
<Taiwan>



Kumamoto University Liaison Office in Tanzania
<Tanzania>



8 Global Engagement



TOP GLOBAL UNIVERSITY PROJECT

In 2014, Kumamoto University was selected as one of 37 universities to take part in the Top Global University Project, implemented by the Ministry of Education, Culture, Sports, Science and Technology. Our slogan "A Leading University Cultivating Global Leaders from Kumamoto" reflects educational reforms which aim to transform Kumamoto University into a truly global university and help us become established and ranked as a world-class institution with state-of-the-art research centers.

Select Achievement

Number of KU Global Youth
Campus Program participants

1,107 (AY2023)

(The KU Global Youth Campus Program aims to develop and provide a global education environment through a variety of learning experiences and events for young people who are preparing for higher education.)

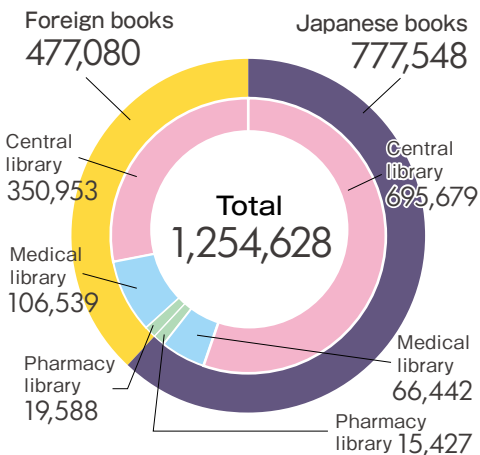
Number of international
double-degree programs

27 (AY2022)



9 University Library

More than **1,250,000** books More than **16,000** titles of electronic journals



The University Library is composed of the Central Library, the Medical Library and the Pharmacy Library. Approximately 240,000 visitors borrow 52,000 books in a year.

(April 2023 to March 2024)

10 University Hospital

clinical departments **33**

Number of beds **845**

Number of staff members **2,192**



(June 1st, 2024)

Number of patients

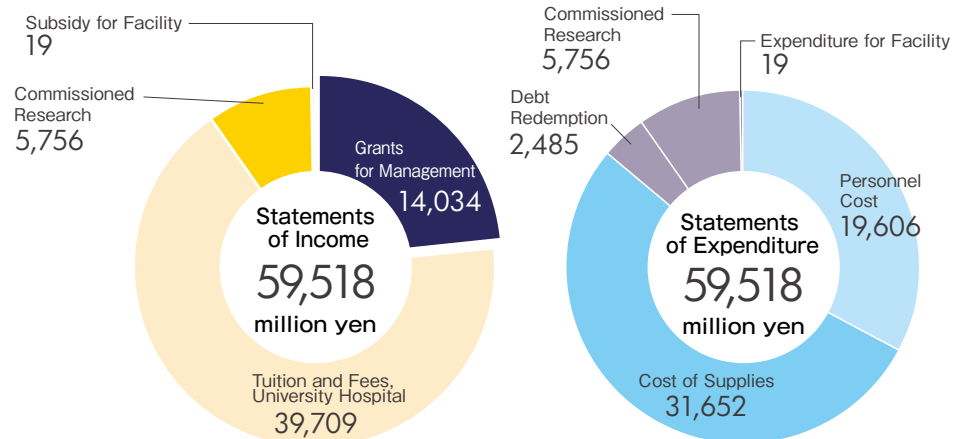
Cumulative total number of outpatients **357,884** Average number of outpatients **1,472.8** per day

Cumulative total number of inpatients **247,635** Average number of inpatients **676.6** per day

(April 2023 to March 2024)

11 Budget Breakdown

Budget for FY2024: **59.5** billion yen



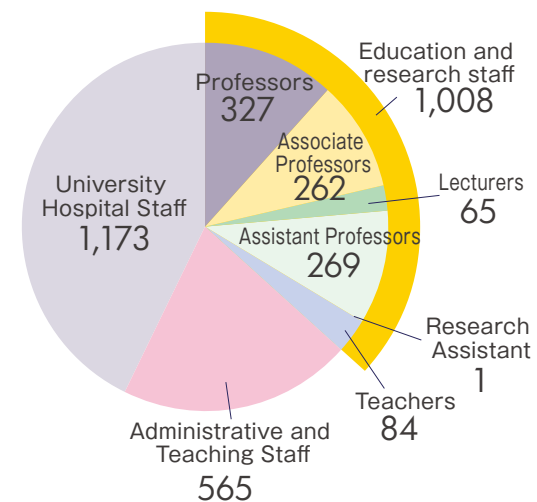
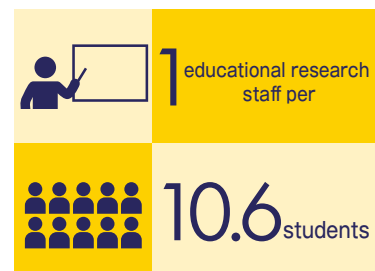
12 University Personnel

Number of University Personnel

2,746

Including **1,008** education and research staff

(May 1st, 2024)



*Including parental leave etc.
*Except for the fixed-term employment staff

13 University Campuses

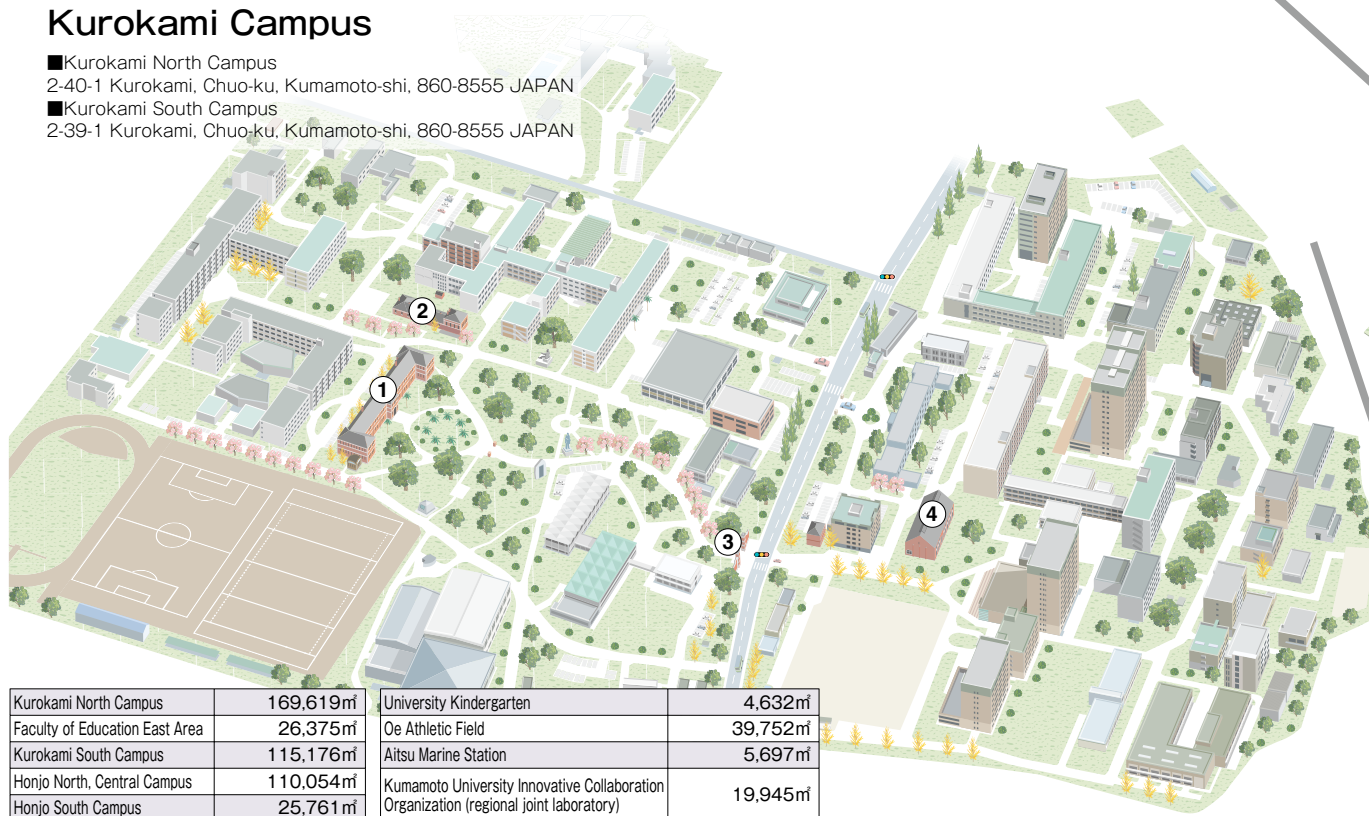
Kumamoto University has three campuses. The total area is approx 680,000 square meters. The main building of the former Fifth High School, now the Memorial Museum, is the symbol of Kumamoto University. The building has been designated as an Important Cultural Property.



①The Memorial Museum of the Fifth High School* ②The Chemical Laboratory of the Fifth High School* ③The Front Gate* ④Museum of the Engineering Faculty*
*National Important Cultural Property

Kurokami Campus

- Kurokami North Campus
2-40-1 Kurokami, Chuo-ku, Kumamoto-shi, 860-8555 JAPAN
- Kurokami South Campus
2-39-1 Kurokami, Chuo-ku, Kumamoto-shi, 860-8555 JAPAN

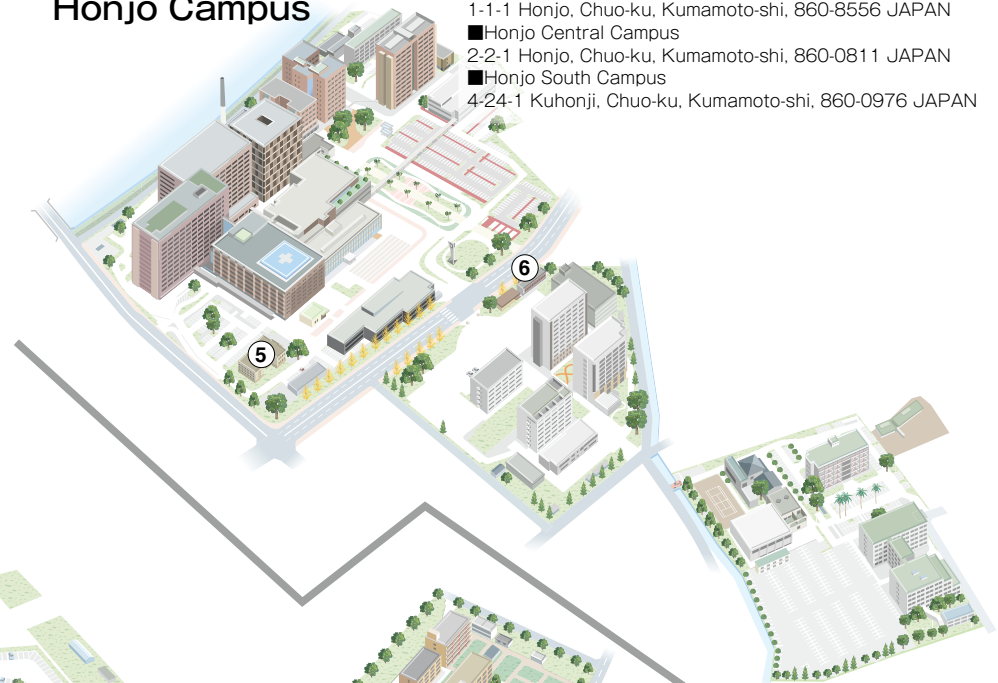


Kurokami North Campus	169,619m ²	University Kindergarten	4,632m ²
Faculty of Education East Area	26,375m ²	Oe Athletic Field	39,752m ²
Kurokami South Campus	115,176m ²	Aitsu Marine Station	5,697m ²
Honjo North, Central Campus	110,054m ²	Kumamoto University Innovative Collaboration Organization (regional joint laboratory)	19,945m ²
Honjo South Campus	25,761m ²	Other	58,552m ²
Oe Campus	53,352m ²	Total	680,462m²
Kyomachi area	51,547m ²		

(As of May 2024)

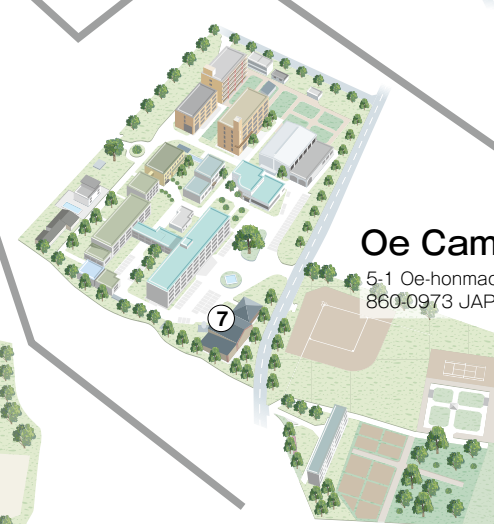
Honjo Campus

- Honjo North Campus
1-1-1 Honjo, Chuo-ku, Kumamoto-shi, 860-8556 JAPAN
- Honjo Central Campus
2-2-1 Honjo, Chuo-ku, Kumamoto-shi, 860-0811 JAPAN
- Honjo South Campus
4-24-1 Kuhonji, Chuo-ku, Kumamoto-shi, 860-0976 JAPAN



Oe Campus

- 5-1 Oe-honmachi, Chuo-ku, Kumamoto-shi, 860-0973 JAPAN



⑤Yamasaki Hall (Registered Tangible Cultural Property) ⑥Higo Iku Museum (Higo Iku Monument Hall) ⑦The Kumayaku Museum (Kumayaku Alumni Hall)



Kumamoto Castle



Suizenji Park



Winter in Aso



Dolphins at Amakusa



Manda Coal Mine
(UNESCO World Heritage)

創造する森 挑戦する炎

井上雄彦 記す



国立大学法人 熊本大学

〒860-8555

熊本県熊本市中央区黒髪 2-39-1

TEL.096-344-2111 (代表)

<https://www.kumamoto-u.ac.jp>

